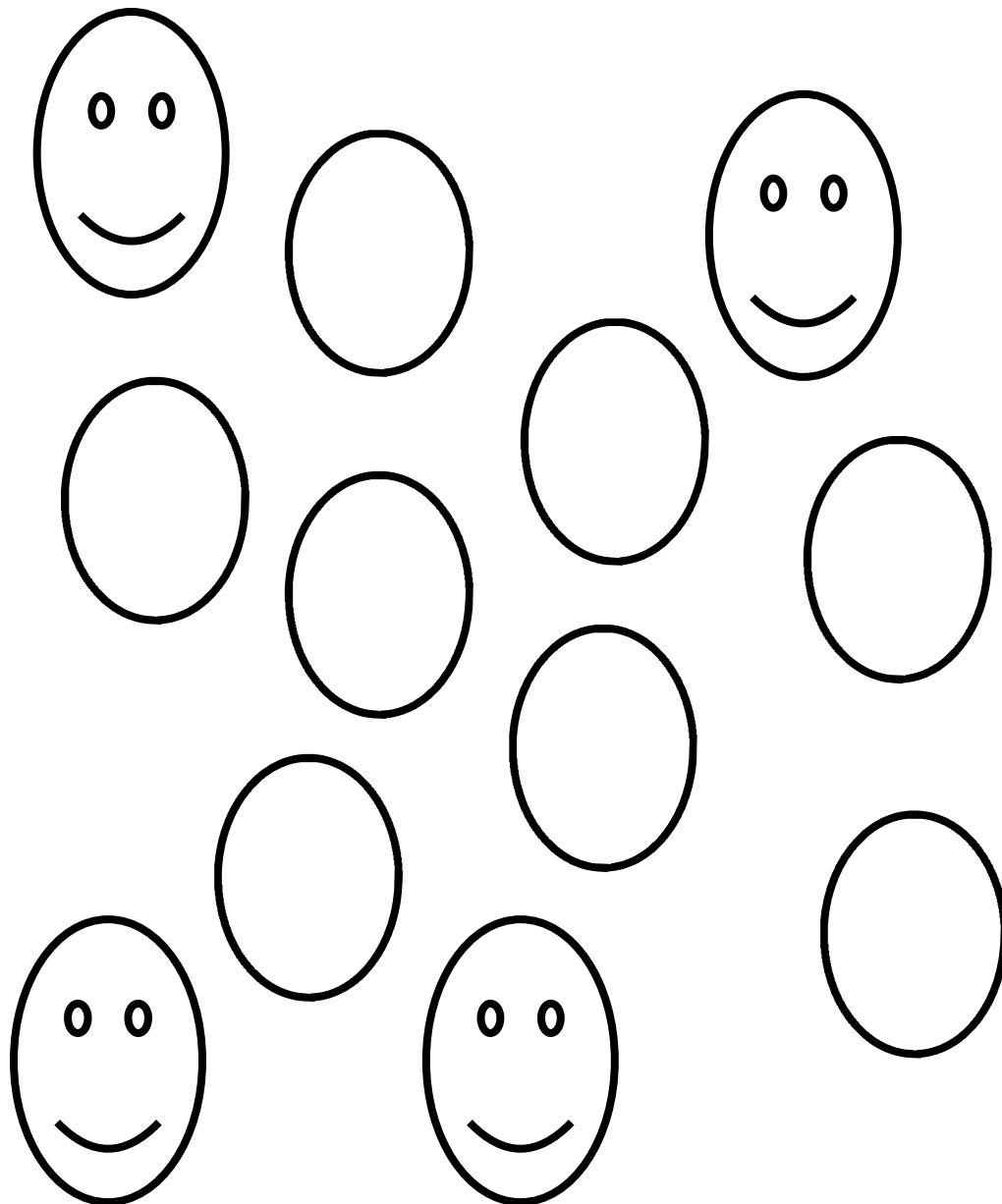
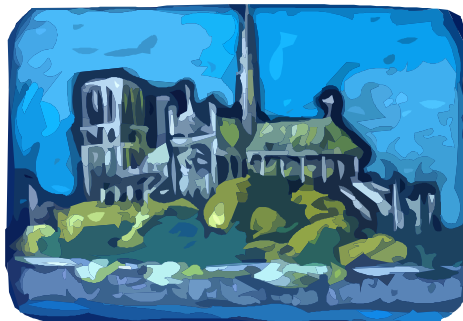
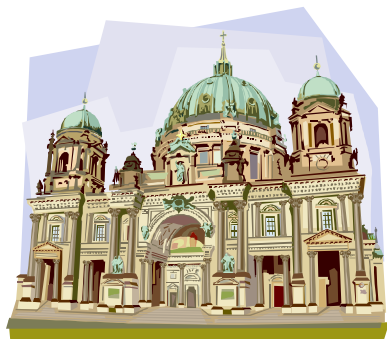


Churches are made up of different people.
Draw and name the people in your church.



Churches are all different, draw what your church looks like.



Trace the letters and then
read the message!

I

GO TO

CHARM

Dot to Dot

5

4•

•6

3•

•7

2•

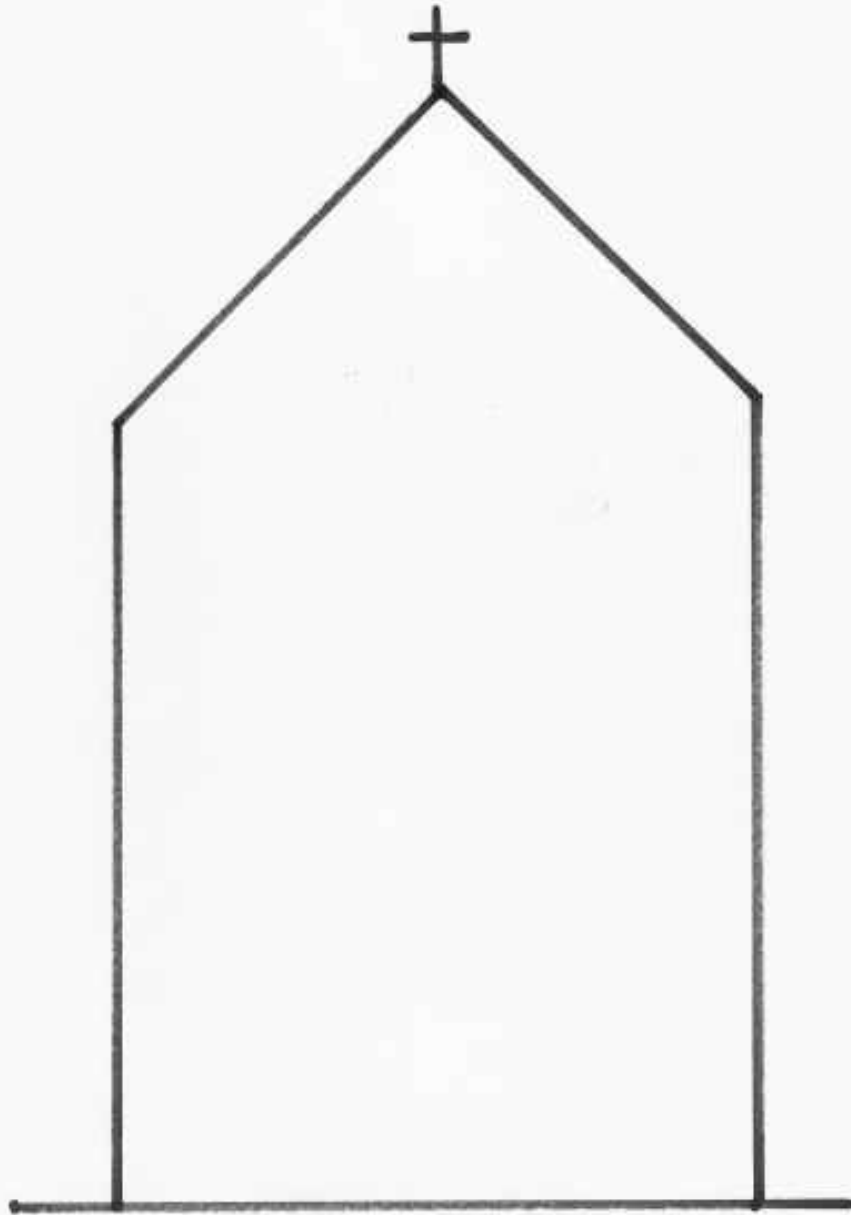
•8

1•

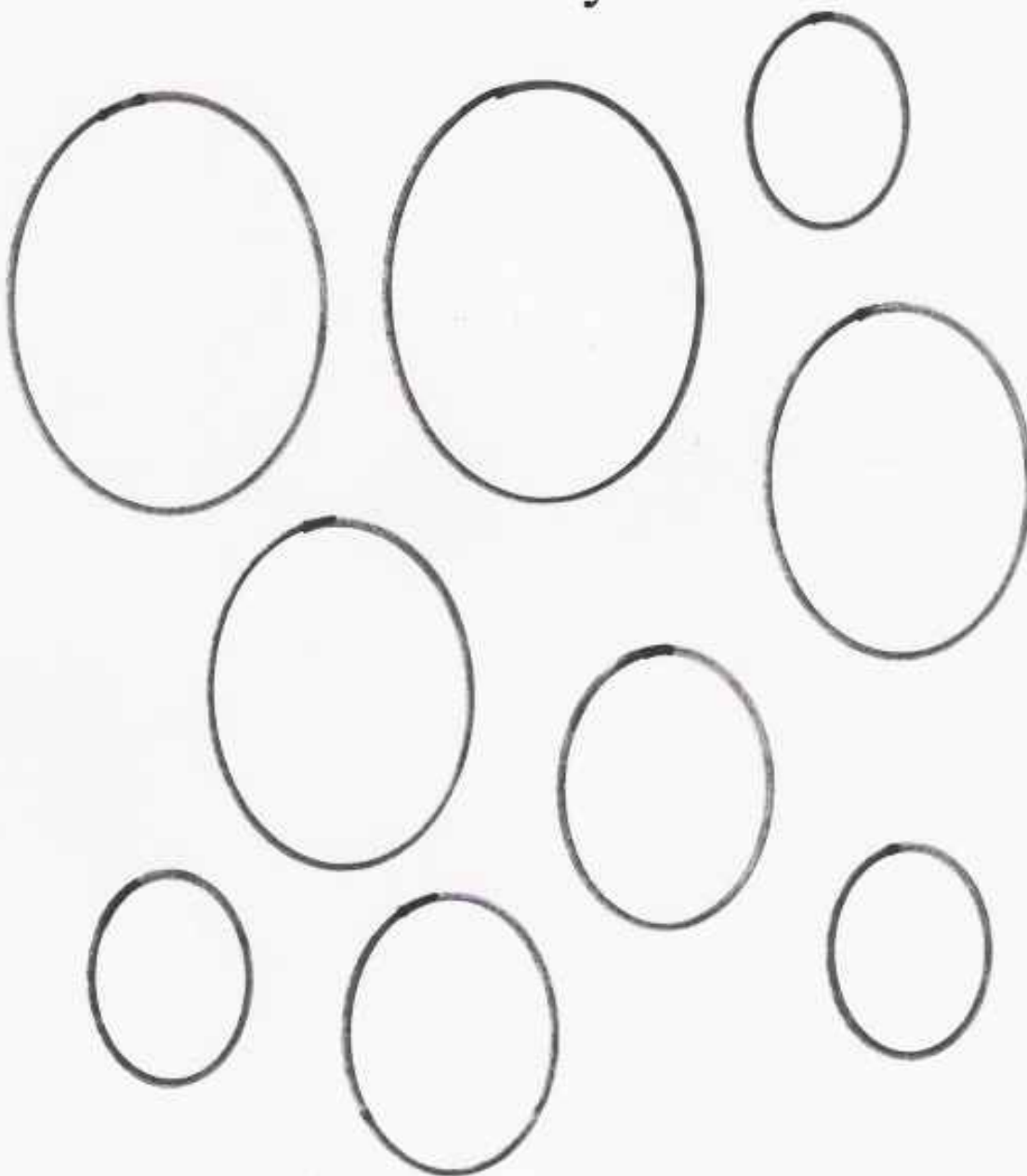
•9

Can you put a cross on top of
your church?

Put people in the church



Put faces on your church
family!



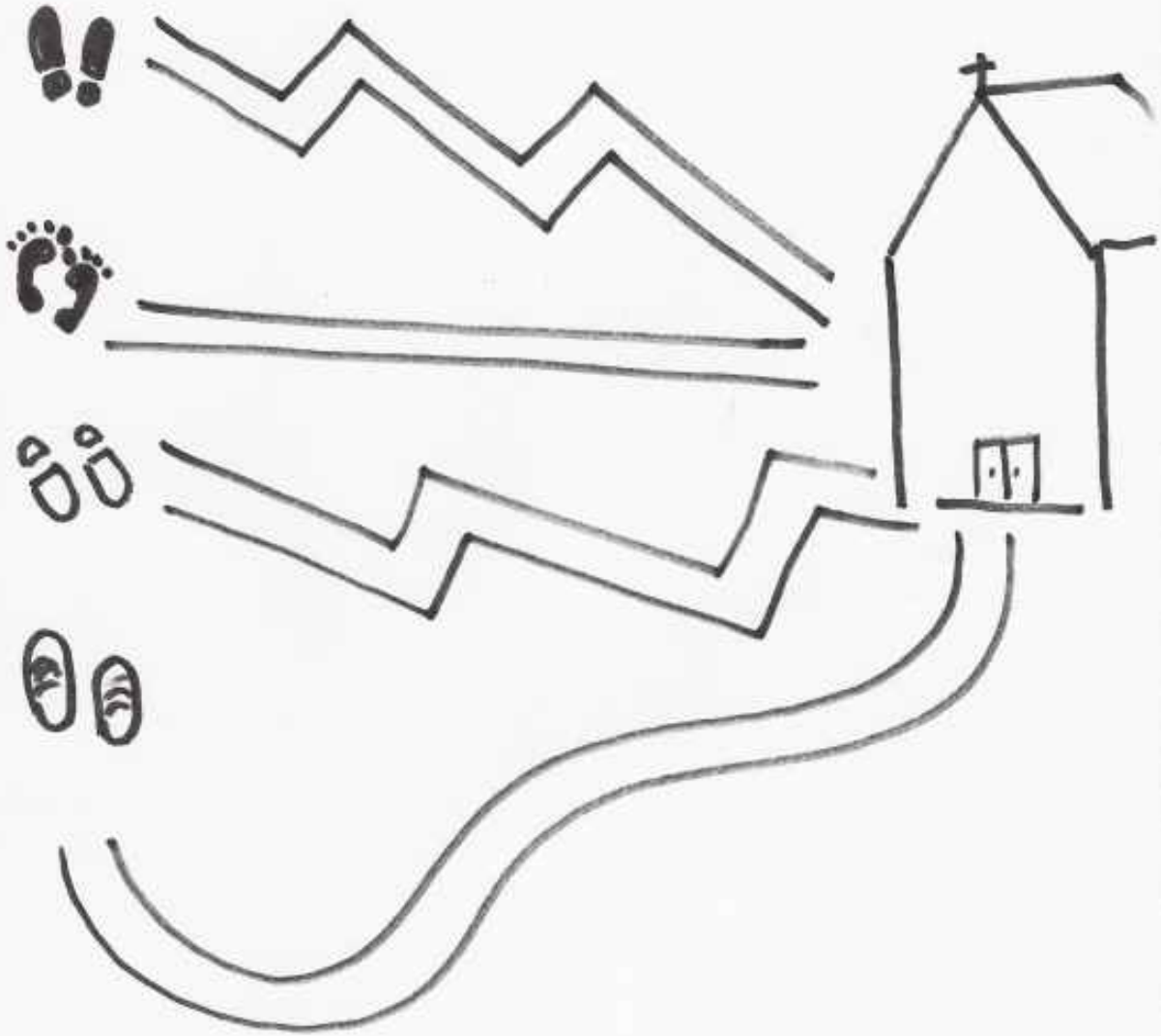
Follow the footprints to church!



Match the feet!



Follow the paths to church!



Color the Church

